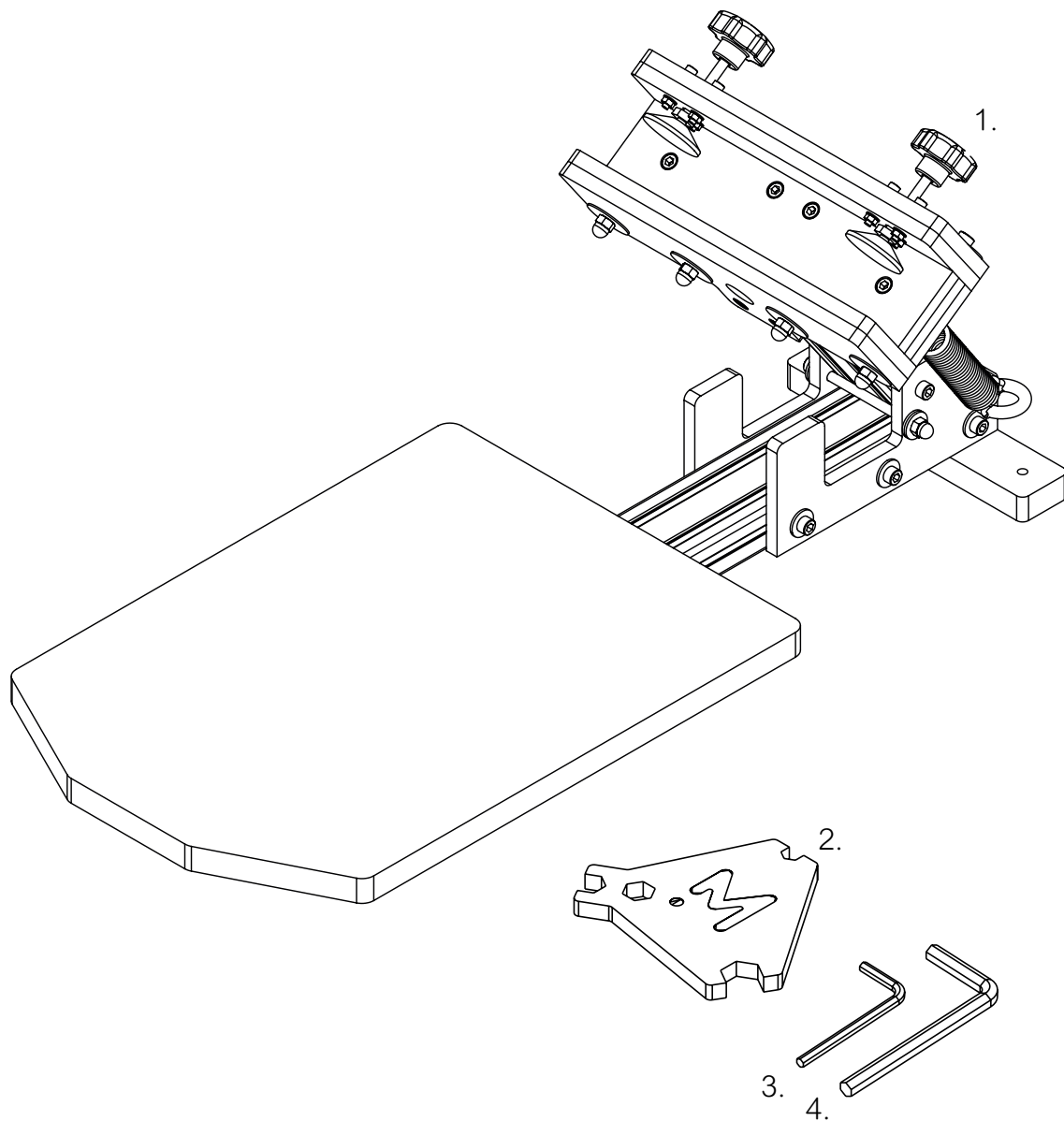


MEKANIKA

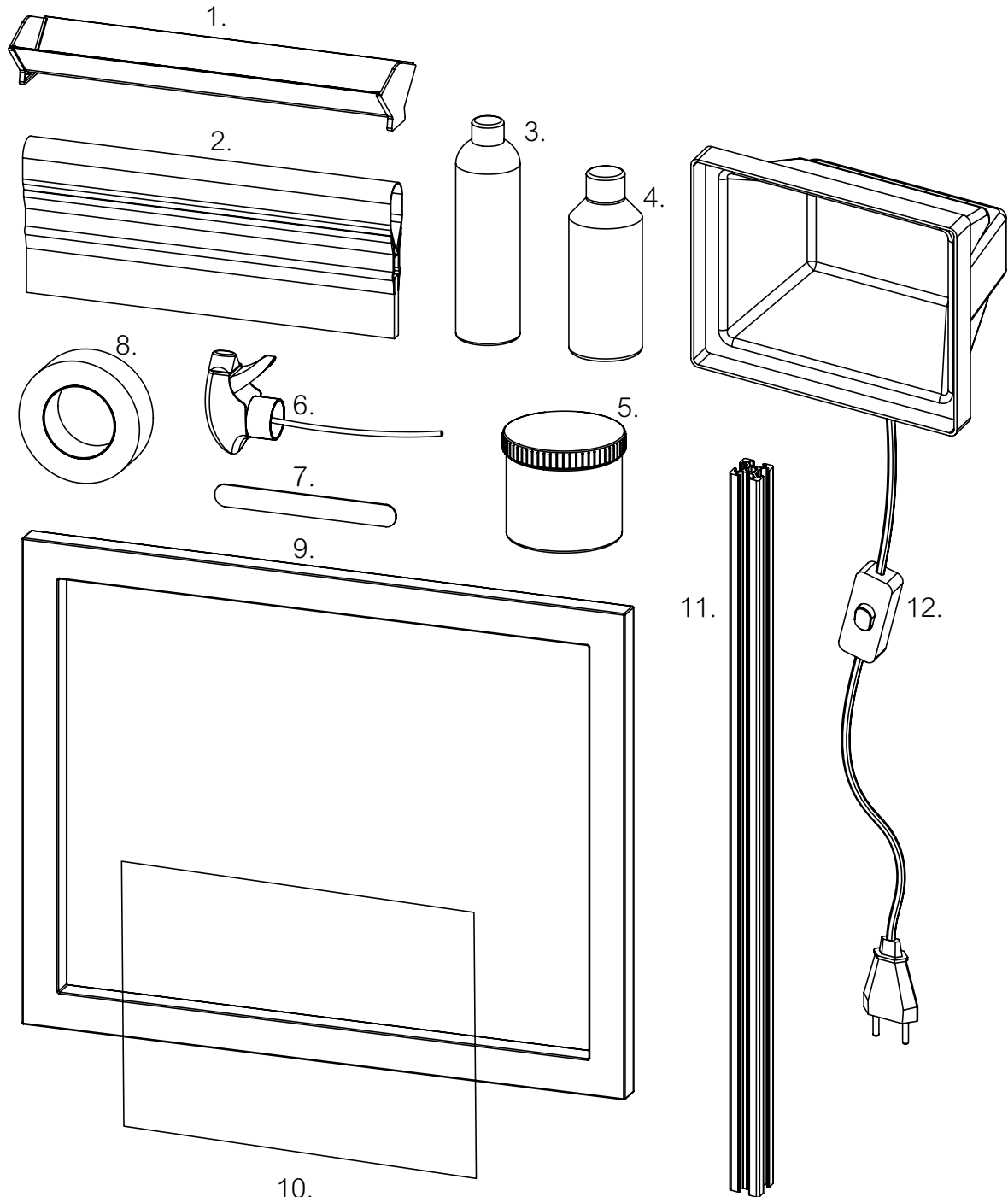
SCREEN PRINTING

BUNDLE

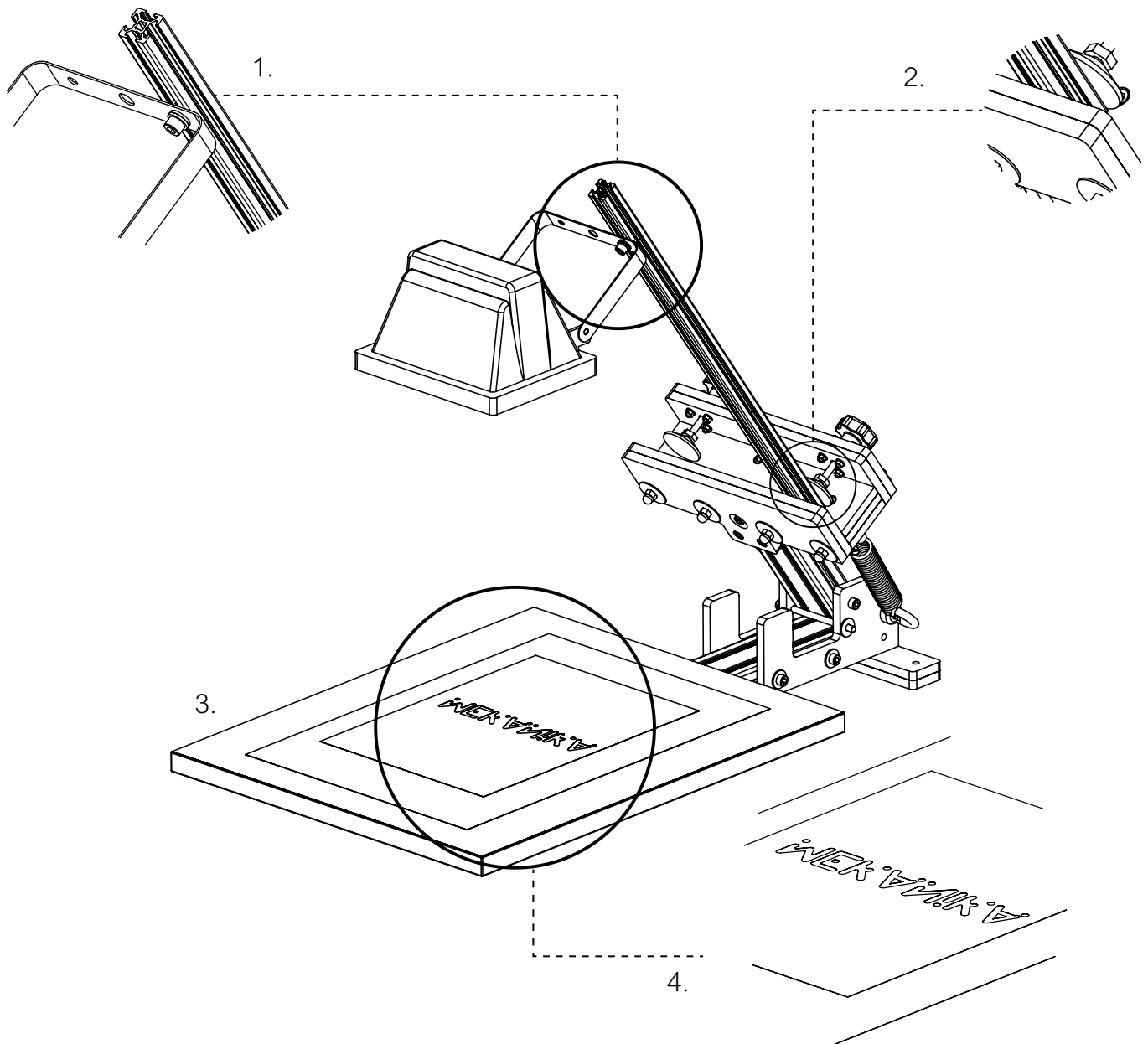


1.Screen printing press 2.Multi-tool 3. Hex key 3mm 4.Hex key 5mm

You have to set up the screen printing press yourself. Refer to the assembly guide available for download on our website: www.mekanika.io/screen-printing-press



- 1.Scoop coater 2.Printing squeegee 3.Emulsion 4.Emulsion remover 5.Ink 6.Trigger Sprayer lid
7.Stiring stick(*3) 8.Masking 9.Screen 50x40



1. Attach the halogen spotlight to the aluminium profile 20x20x500mm using the M6x10 screw, washers and square nut supplied. The spotlight must be fixed at the end of the profile and be positioned approximately 60cm from the printing surface.

2. Fix the aluminium profile using the clamping system of your press.

3. Once your frame is coated and dry (see Emulsion section), place it on the printing surface of your press. The printing surface must be positioned "inside" the frame.

4. Then place your type on your frame. Be careful to turn the logo over: **it must be in the opposite direction of your final print.**

*The screen master must be placed against the emulsion, do not hesitate to stick it with transparent tape, or better, by covering the whole with a glass or Plexiglas plate.

5. When everything is in place, turn on the halogen spotlight. For a successful exposure, the exposure should last 4 minutes. Use a stopwatch and turn the spotlight off after the time has elapsed.

Have a look at the **MEKANIKA** channel on Youtube, you will find all the information you need to get off to a good start!

Emulsion

- Shake the bottle a few seconds before each use to mix the product.
- Use the mixing stick to return excess emulsion to the bottle after use

Exposure process

- Refer to the "EXPOSURE" page.
- During the exposure, the screen master must be fully plated against the emulsion to avoid burrs. Don't hesitate to tape your screen master (with transparent tape) or better, to place a glass or Plexiglas plate on top of it.
- To reveal your design, let water run at low pressure on the screen. If your emulsion is struggling to come off, gently rub each side of the frame with a sponge to remove the tougher emulsion.

Ink

- Water-based ink can be diluted with 10% water.
- Blend the ink with a mixing stick until a light and creamy texture is obtained.
- During printing, the ink may dry and clog the mesh of your screen. Don't panic, spray the clogged area lightly with water, clean the area and resume printing.

Emulsion remover

- CAUTION: The emulsion remover is a very corrosive product, handle with care.
- Place the spray cap on the bottle when using it.
- The emulsion remover is to be used when scraping the screen and not to clean the ink. It will be used to modify the image on your screen.
- You will need a high pressure cleaner (karcher type) to remove the emulsion from your screen (not supplied in this kit).

Assembly of the screen printing press

- Make yourself comfortable, the assembly should take you between 1h and 1h30.
- Use the small ruler below to identify screws of different sizes.
- In addition to the tools provided in the kit, you will need a screwdriver and a tape measure or ruler.

